

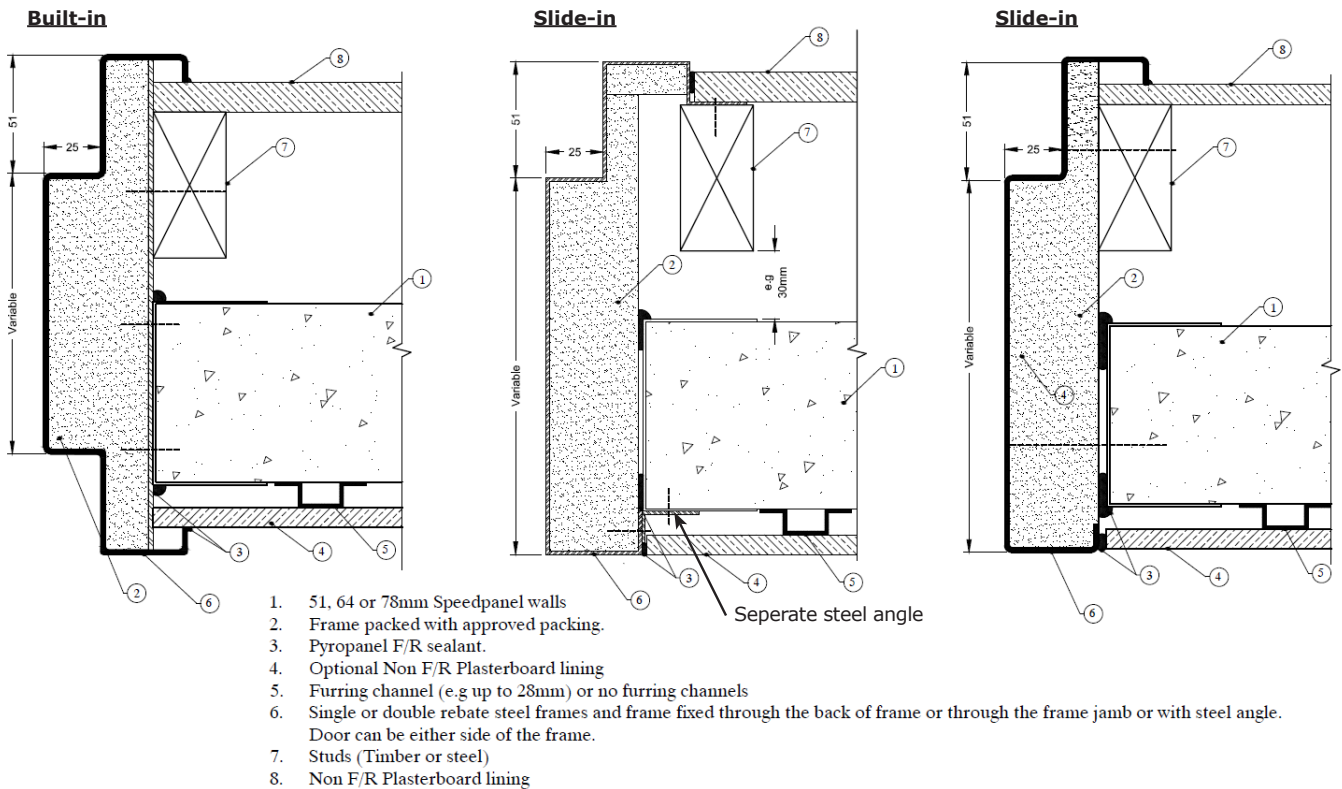
BUILDING IN DETAILS

Speedpanel walls (51, 64 & 78mm)

BUILDING DETAILS CONTINUED...

Building-in details showing the approved fixing methods for Pyropanel 48mm nominal doors in Speedpanel walls for up to 2 hours of fire rating (51mm = 1 hr, 64mm = 1.5 hrs, 78mm = 2 hrs)

Slide-in & Built-in details with Speedpanel + plasterboard walls (one side)



Note: Approved frame packing materials: Fire rated plasterboard, Pyropanel M4 lightweight mortar or mortar. Frames screw fixed at nominal 400mm centres.

ASSA ABLOY Australia Pty Ltd

235 Huntingdale Rd, Oakleigh, Vic 3166

Ph: **(03) 9837 8500**

Email: sales@pyropanel.com.au

Web: www.pyropanel.com.au

Distributed by:

Solwest Doors

Ph: **(08) 9309 3899**

Email: sales@solwest.com.au

Web: www.solwest.com.au



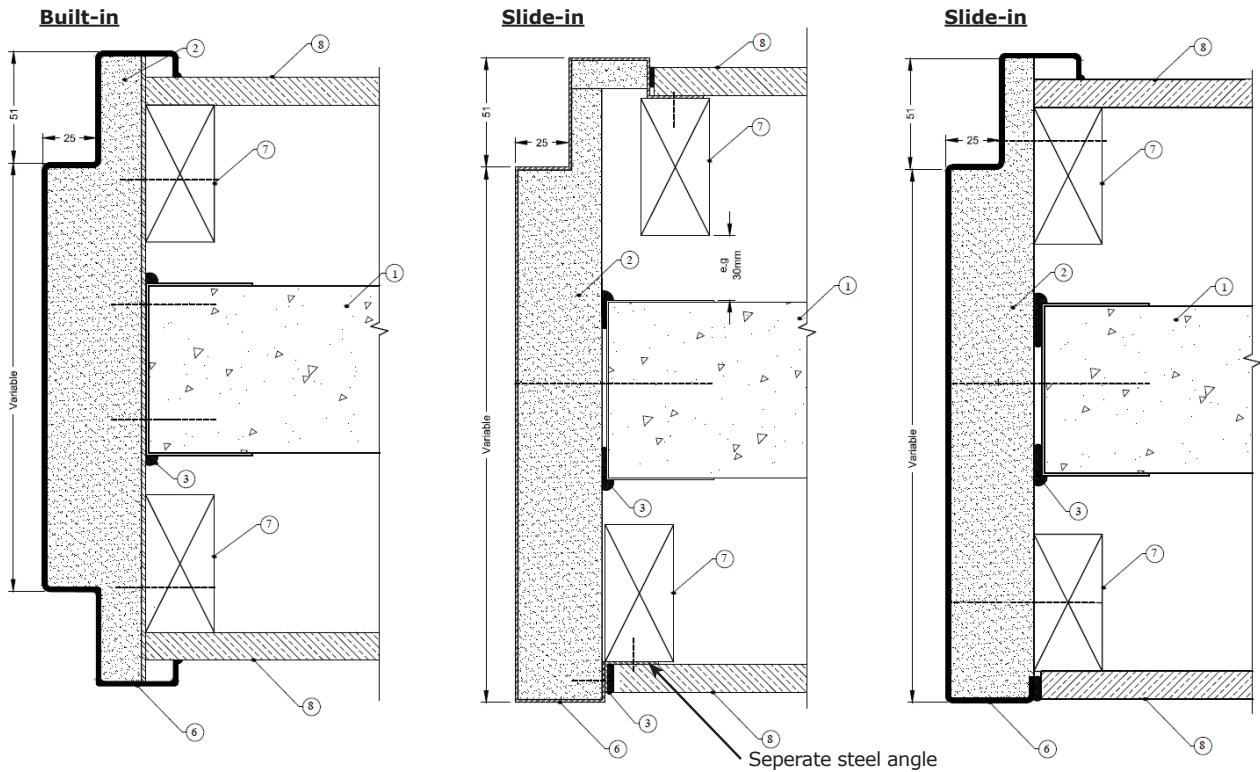
BUILDING IN DETAILS

Speedpanel walls (51, 64 & 78mm)

BUILDING DETAILS CONTINUED...

Building-in details showing the approved fixing methods for Pyropanel 48mm nominal doors in Speedpanel walls for up to 2 hours of fire rating (51mm = 1 hr, 64mm = 1.5 hrs, 78mm = 2 hrs)

Slide-in & Built-in details with Speedpanel + plasterboard walls (either side)



Note: Approved frame packing materials: Fire rated plasterboard, Pyropanel M4 lightweight mortar or mortar. Frames screw fixed at nominal 400mm centres.

ASSA ABLOY Australia Pty Ltd
235 Huntingdale Rd, Oakleigh, Vic 3166
Ph: **(03) 9837 8500**
Email: sales@pyropanel.com.au
Web: www.pyropanel.com.au

Distributed by:
Solwest Doors
Ph: **(08) 9309 3899**
Email: sales@solwest.com.au
Web: www.solwest.com.au

