

FIRE DOORSETS AND PANEL OVER (WITH TRANSOM)

DESCRIPTION

Timber fire door leaves and panel over including separating transom, utilising the latest Pyropanel fire resistant door core and design technology. These doorsets are approved to AS1530.4:2014, and are available in a variety of sizes and finishes in 1 hour and 2 hour fire resistance levels.

APPLICATIONS

Ideal for applications that require a certified fire door and a panel over with a separating transom. Typically found in office lobbies, hospitals, schools, public buildings, shopping centres, factories, warehouses, plant rooms, etc.

FEATURES

- Panel available over single and pair fire door leaf configurations (note: panel over pair doors is a single panel only)
- Door and panel are 48mm nom. thick.
- Pressed metal door frames only.
- Facings - Ply, MDF or Hardboard (tempered and non-tempered).
- Panel is screw-fixed, with optional collet and cap.

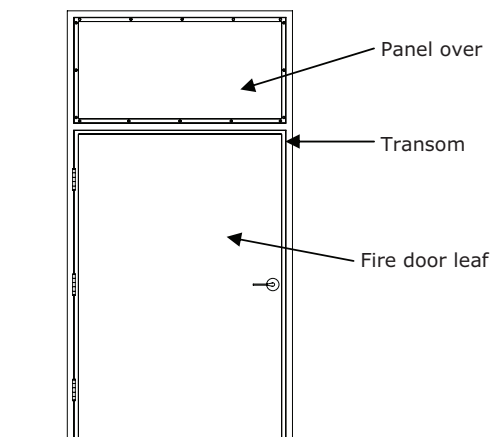
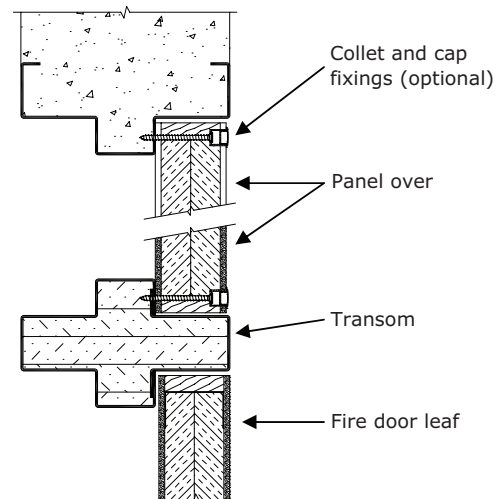
OPTIONAL EXTRAS

- Vision panels up to 300mm x 200mm or 600mm x 100mm.
- Kick panels of stainless steel to selected height.

MODELS AVAILABLE

Model	Description	Max FRL	Max Leaf Size (H x W)	Max Panel size (H x W)
FDPO-WT-60-30	Single	-/60/30	3000 x 1500	1120 x 1500
	Pair	-/60/30	3000 x 1500 / 1500	1120 x 3010
FDPO-WT-120-30	Single	-/120/30	2700 x 1500	1120 x 1500
	Pair	-/120/30	2700 x 1350 / 1350	1120 x 2710

Refer to your preferred Pyropanel licensed distributor to confirm:
 1. Chosen door hardware is approved.
 2. Optional extras are suitable for chosen door type.



HOW TO SPECIFY

"Door to be a Pyropanel FDPO-WT-60-30* Fire Rated Door with Panel Over (with transom), 48mm nom. thick, -/60/30* FRL, Ply faced*, mounted in Pyropanel filled steel door frame, and the following options: (eg, vision panels, kick-plates, etc*).

* denotes example - delete, change or specify as required

ASSA ABLOY Australia Pty Ltd

235 Huntingdale Rd, Oakleigh, Vic 3166

Ph: **(03) 9837 8500**

Email: sales@pyropanel.com.au

Web: www.pyropanel.com.au

Distributed by:

Solwest Doors

Ph: **(08) 9309 3899**

Email: sales@solwest.com.au

Web: www.solwest.com.au

